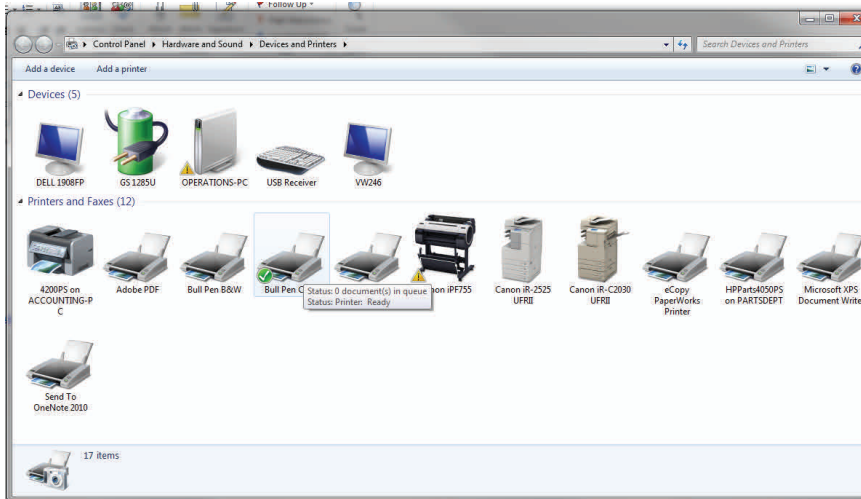
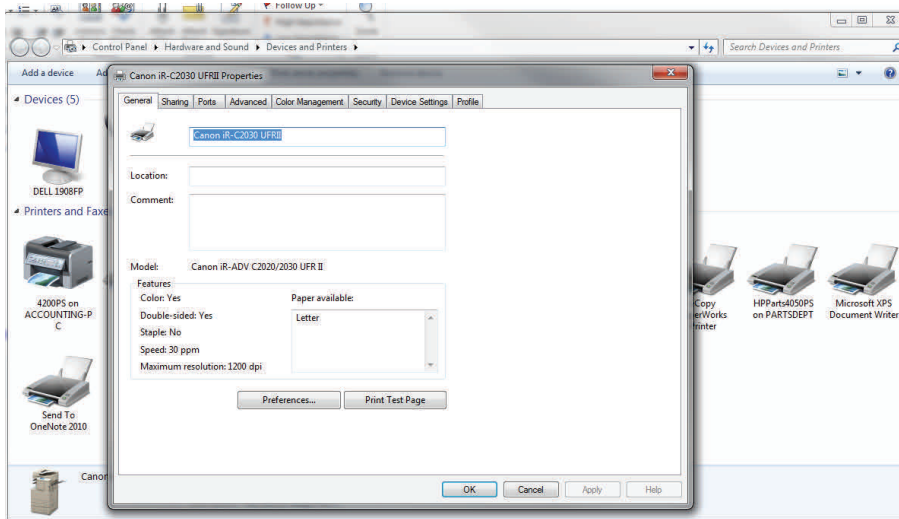


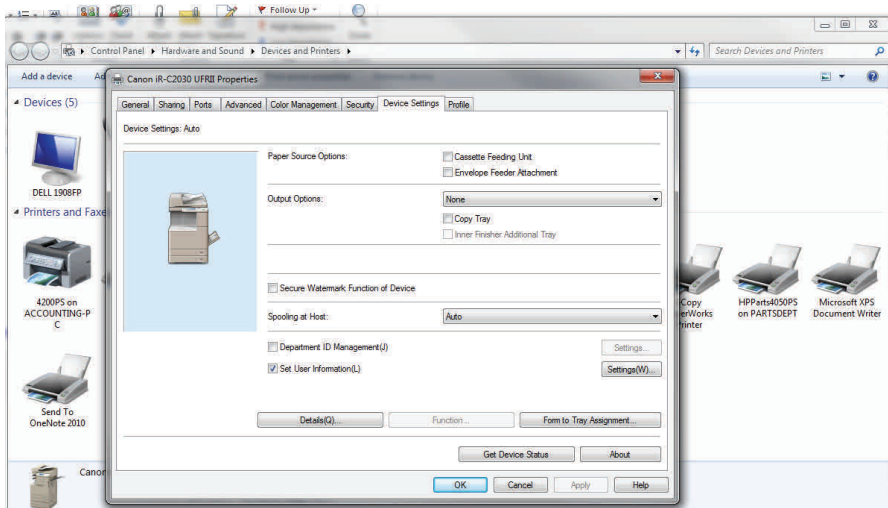
# 1) Go to you printers and faxes



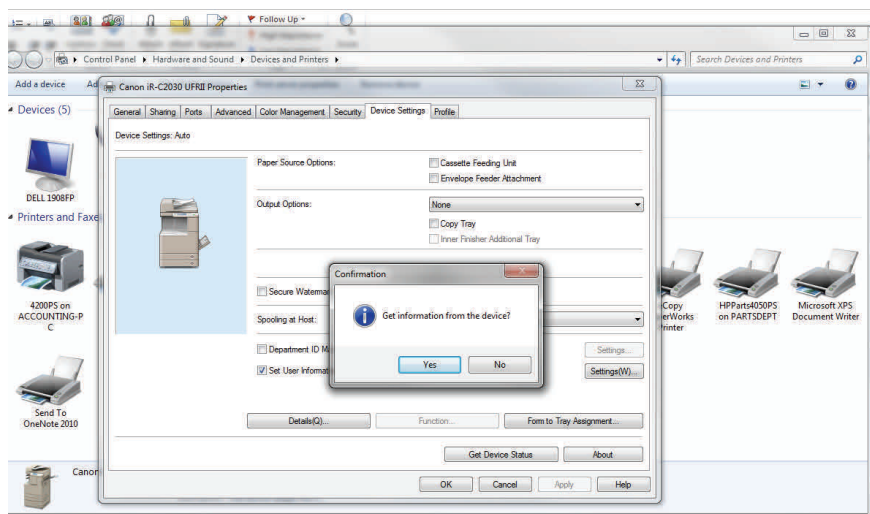
# 2) Right click on printer driver and go to properties, if you are on a Windows 7 computer you will need to go to Printer Properties. This is what you will see:



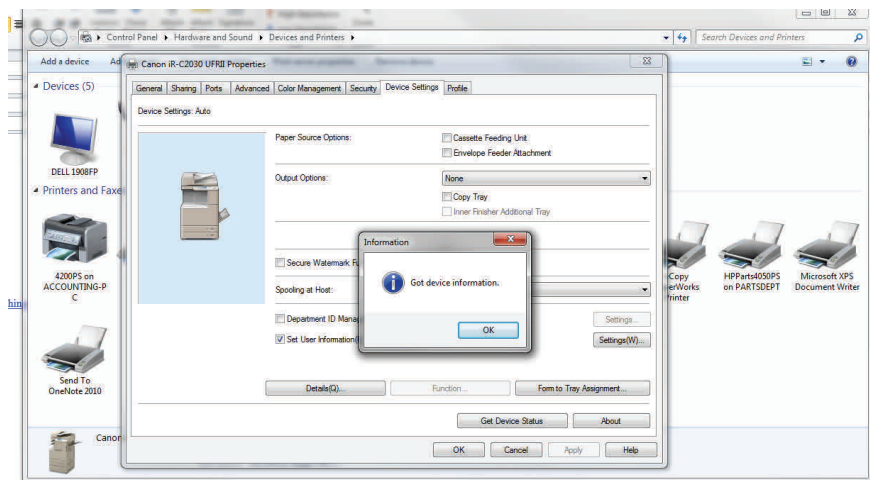
# 3) Go to Device Settings and this is what you should see:



4) Click on Get Device Status and you should see this. Click Yes.



5) Click ok when Got Device Information pops up.



6) Click Apply and Say OK.